



Burnet County Transportation Plan Update

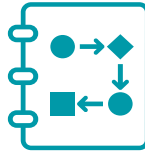
September 23, 2025



What is a Metropolitan Planning Organization (MPO)?



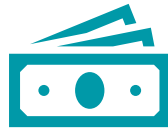
Required in areas with **50,000+** population



Set policy and guide the **transportation planning process**



Develop a multi-modal, 25-year **regional transportation plan (RTP)** and **four-year program of projects (TIP)**



Provide a forum for **project selection** by local officials for **federal and select state funds**



Governed by **Transportation Policy Board (TPB)**



CAMPO's Planning Process



2 Regional Long-Range Plan

CAMPO uses recommendations from plans and studies to create a cohesive, multimodal plan. **Local governments** participate in plan development.



3 Project Selection and Funding



Local project sponsors submit applications to **CAMPO** to fund projects identified in plans.



1 Local and Regional Plans and Studies

CAMPO works with **local governments, leadership, and communities** to identify and incorporate needs

4 Project Implementation



Local project sponsors analyze, design, and construct projects





Burnet County 2020 Transportation Plan



- First presented to Burnet County Commissioners Court in October 2020
- Accepted by commissioners in January 2021
- Plan identified locations and recommended cross-sections of arterial roadways in anticipation of population and employment growth by 2045
- Used to preserve right-of-way for existing and future transportation corridors

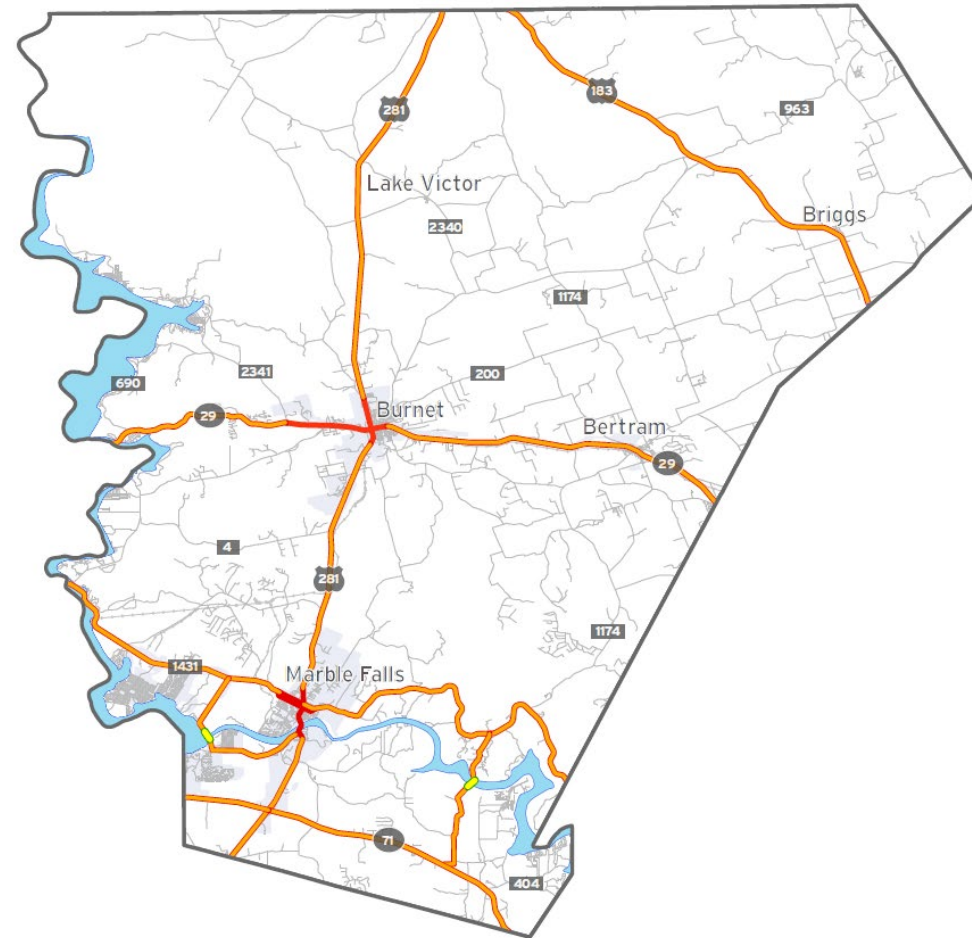


Burnet County 2020 Transportation Plan

Identifies principal arterials
and recommended future
cross-sections



Recommended Arterial Network



0 10 Miles

- Principal - Regional Connector
- Principal - Major Arterial
- New Bridge

Burnet County 2020 Transportation Plan

Identifies principal arterials
and recommended future
cross-sections

Recommended Arterial Network Improvements

Facility	From	To	Current - 2018			Future - 2045		
			Current Functional Class	Design Type	Number of Lanes	Proposed Functional Class	Design Type	Number of Lanes
US 281	Blanco County Line	RM 2147	Principal (Major Arterial)	Undivided	4	Principal (Regional Connector)	Divided	6
	RM 2147	Mission Hills	Principal (Major Arterial)	Undivided	4	Principal (Major Arterial)	Divided	4
	Mission Hills	CR 340 Extension	Principal (Major Arterial)	Undivided	4	Principal (Regional Connector)	Divided	6
	CR 340 Extension	Old San Saba/ Green Mile	Principal (Major Arterial)	Undivided	2 - 4	Principal (Major Arterial)	Divided	4
	Old San Saba/ Green Mile	Lampasas County Line	Principal (Major Arterial)	Undivided	4	Principal (Regional Connector)	Divided	4
US 183	Williamson County Line	Lampasas County Line	Principal (Major Arterial)	Undivided	2	Principal (Regional Connector)	Divided	4
SH 71	Llano County Line	US 281	Minor Arterial	Undivided	2	Principal (Regional Connector)	Divided	4
	US 281	Travis County Line	Principal (Major Arterial)	Undivided	4	Principal (Regional Connector)	Divided	6
SH 29	Llano County Line	RM 2341	Minor Arterial	Undivided	4	Principal (Regional Connector)	Divided	4
	RM 2341	Hill Street	Minor Arterial	Undivided	4	Principal (Regional Connector)	Divided	4
	Hill Street	Williamson County Line	Principal (Major Arterial)	Undivided	4	Principal (Regional Connector)	Divided	6
RM 1431	Llano County Line	US 281	Major Collector	Undivided	4	Principal (Regional Connector)	Divided	4
	US 281	Travis County Line	Major Collector	Undivided	2 - 4	Principal (Regional Connector)	Divided	6
The Narrows Ext.	SH 71 / CR 406	RM 1431 / CR 344	Local	Undivided	2 / New Facility	Principal (Regional Connector)	Divided	2 - 4
Wirtz Dam Road	RM 2147 / S Wirtz Dam Road	RM 1431 / N Wirtz Dam Road	Local	Undivided	2 / New Facility	Principal (Regional Connector)	Divided	2 - 4



Update of the Burnet County Transportation Plan



Update plan and conduct
follow-up studies



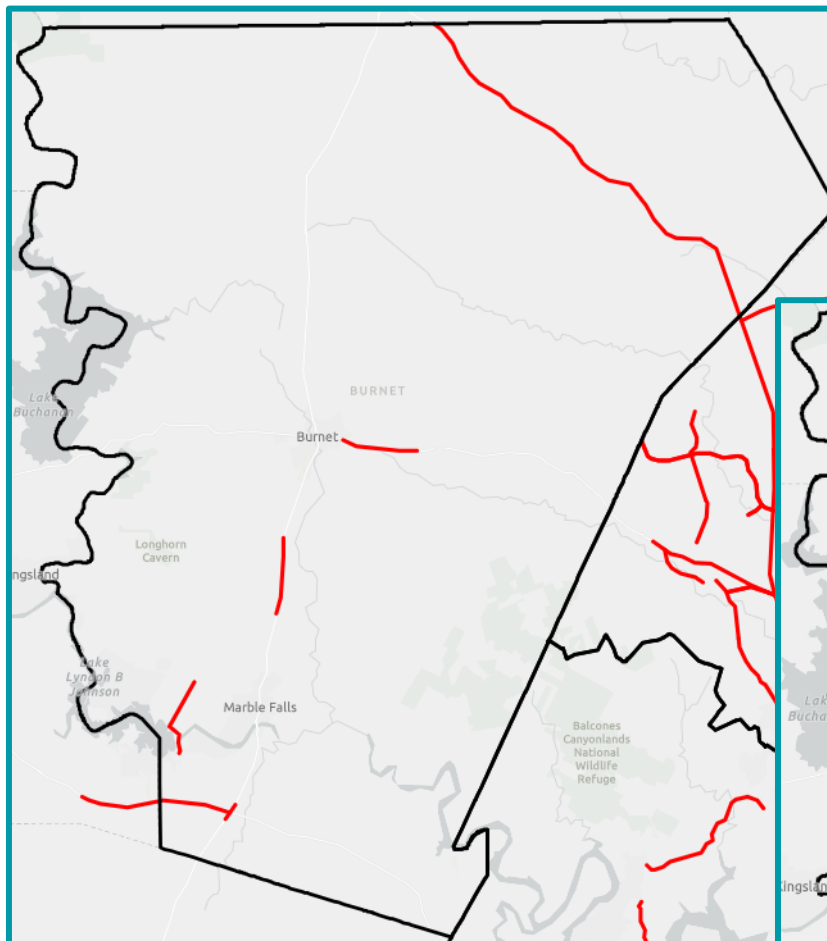
- **Step 1 – Update Burnet County Transportation Plan to reflect recently completed plans/studies and other local transportation priorities**
 - Work by CAMPO – 2050 Regional Transportation Plan, Burnet County Safety Action Plan, Northeast Burnet County Transportation Study
 - Work by others – 2010 Burnet County Transportation Plan (CAPCOG), TxDOT Unified Planning Work Program
 - Gather other priorities from elected officials, agency staff, and the public
- **Step 2 – Conduct feasibility study for US 281 relief route(s) and other associated improvements**





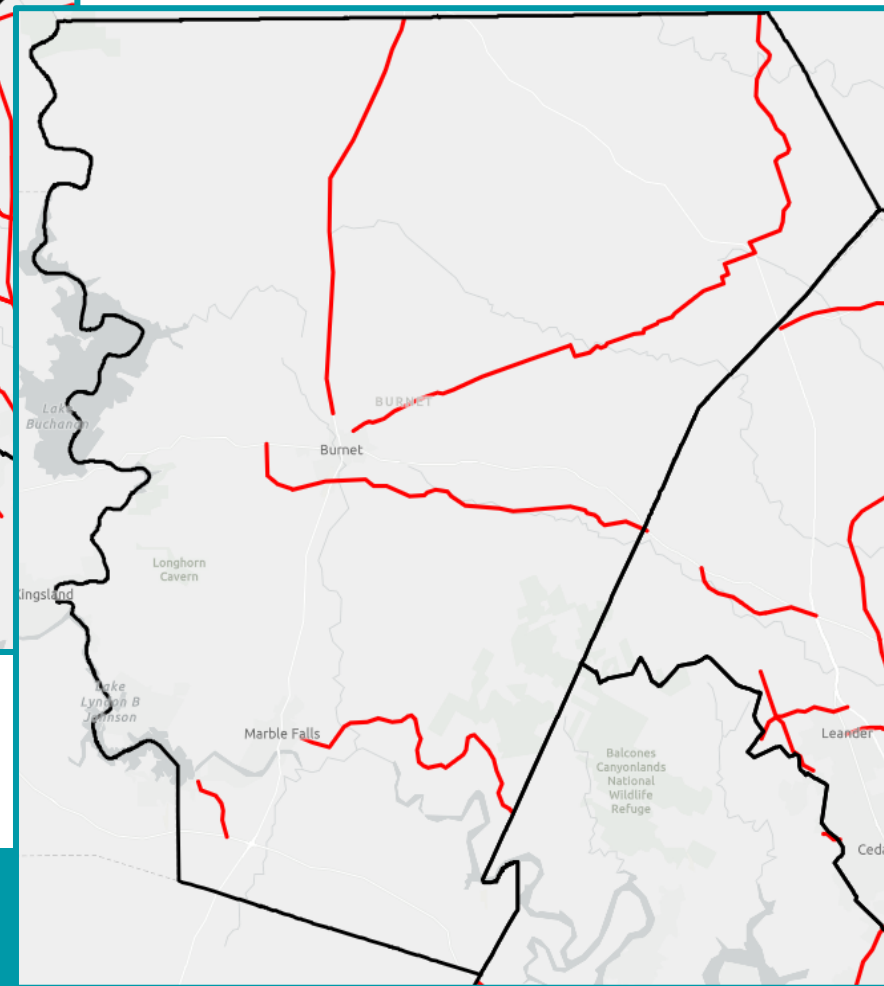
CAMPO 2050 Regional Transportation Plan

Projects submitted by
Burnet County and TxDOT
included in the current
regional long-range
transportation plan



Constrained Projects

Illustrative Projects

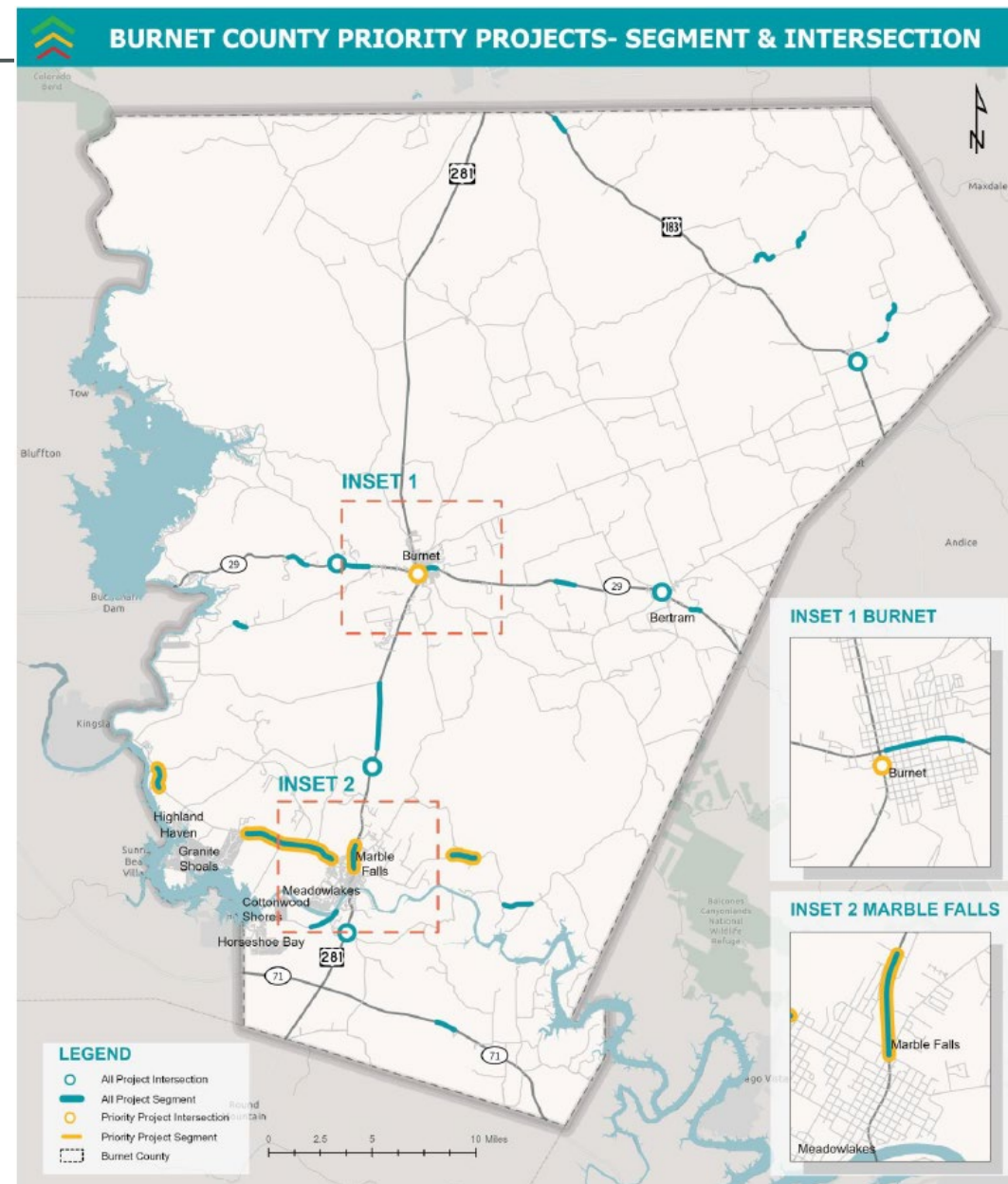


Burnet County Safety Action Plan

Developed by CAMPO using award from the USDOT Safe Streets For All (SS4A) grant program

Projects and strategies that would reduce traffic crashes resulting in fatal and serious injury crashes

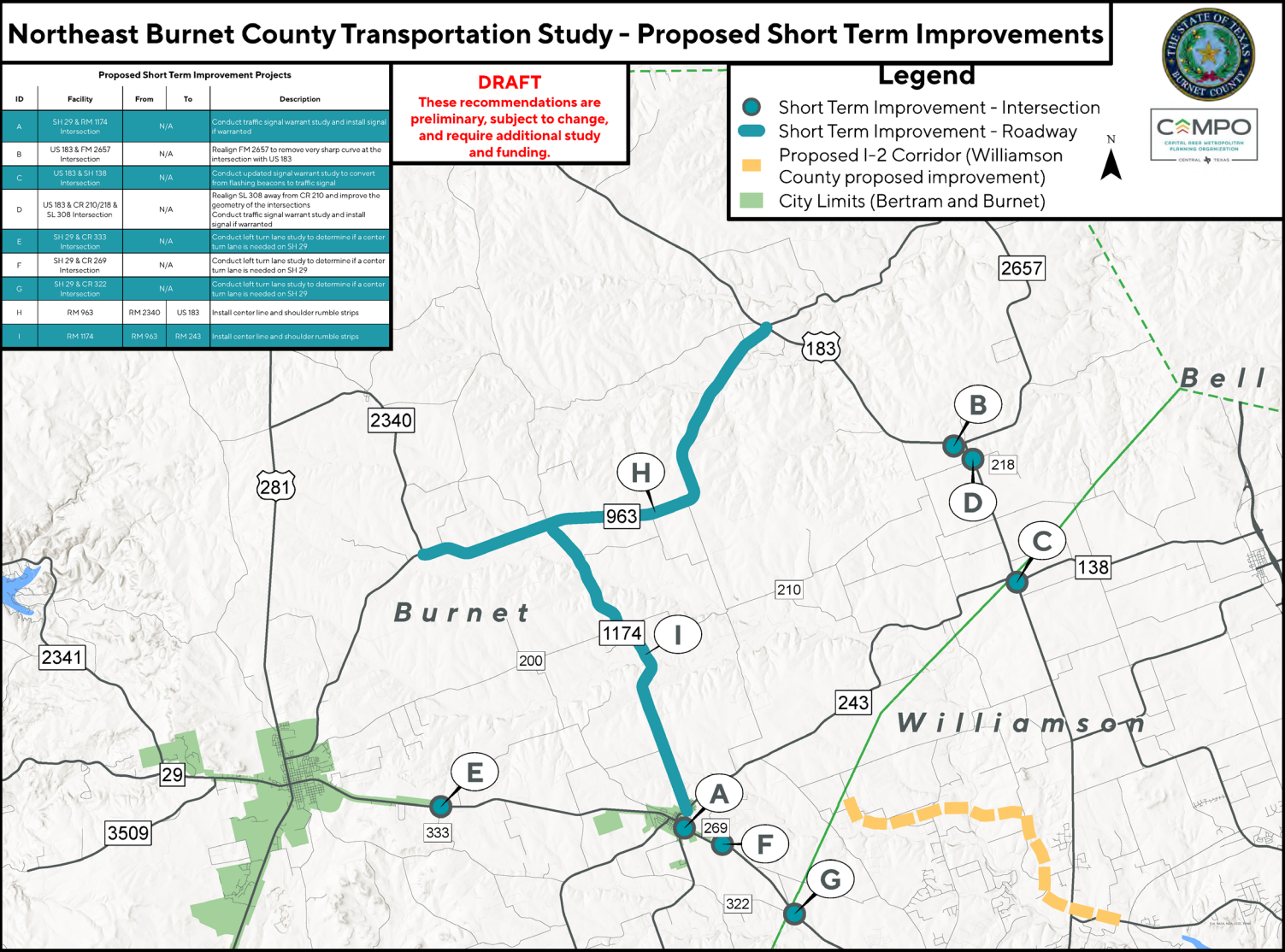
Agencies in Burnet County can apply for safety implementation grants in future SS4A grant cycles for any projects/strategies in the action plan





NE Burnet County Transportation Study

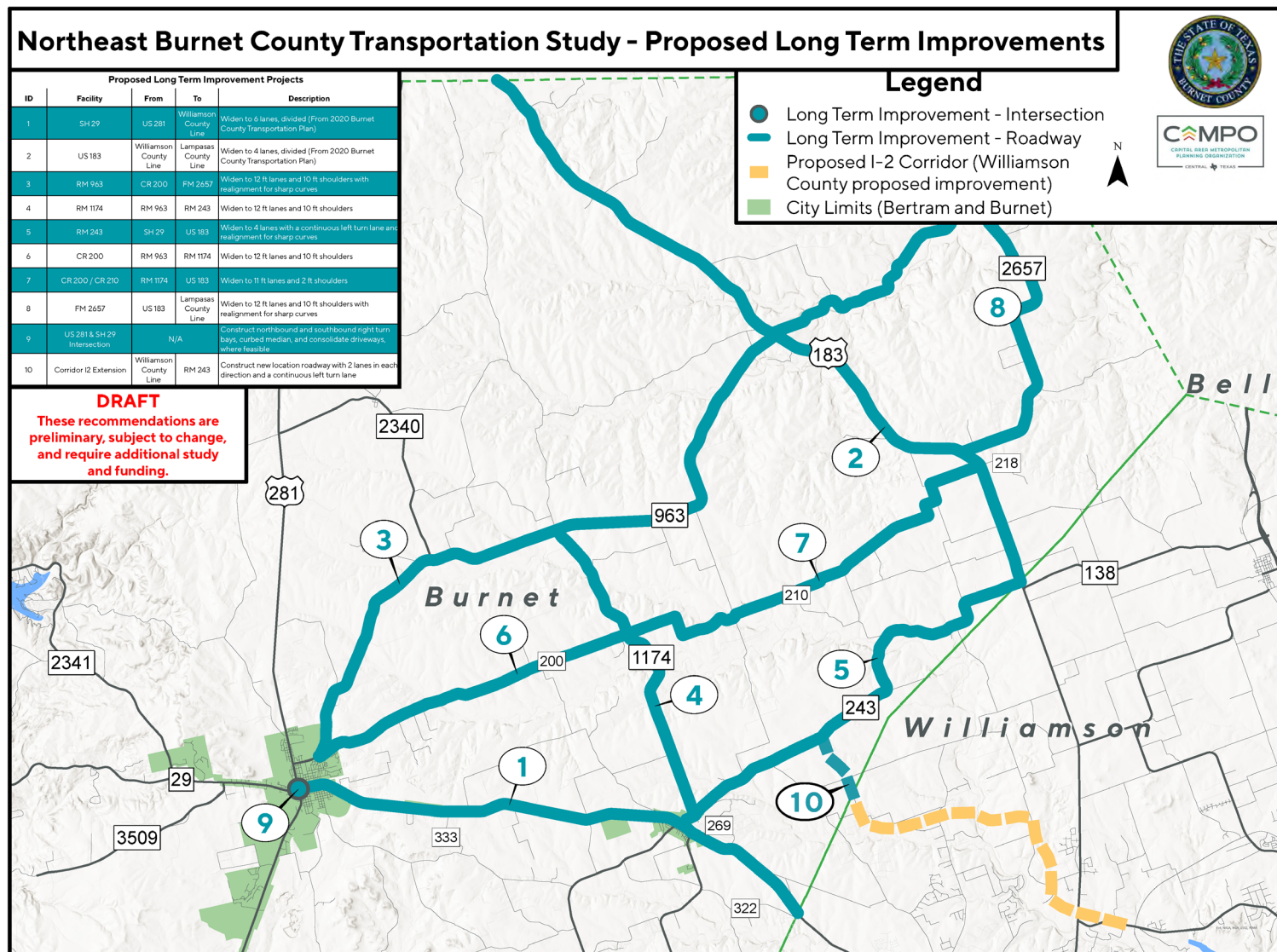
Proposed short-term
improvements





NE Burnet County Transportation Study

Proposed long-term improvements





Plan Update Milestones & Community Outreach



- Compile map and list of projects from completed plans and studies
- Gather needs and priorities from elected officials and local jurisdictions
- Public input on draft project list and plan
 - Public commenting both in person and online
 - CAMPO can provide public comments to Commissioners Court
 - CAMPO can assist County with open house notification language for email, newsletters, etc.
- Approval by Commissioners Court
- Follow-up study – US 281 relief route(s) feasibility study





CAMPO Project Call – Fall 2025



- Member agencies develop applications and apply for federal funding through CAMPO
- Approximately \$380 million available; 20% local match required
- Project call opens early October
- Applications due January 23, 2026
- Eligible roadway project activities
 - Studies
 - Preliminary engineering / environmental clearance
 - Design
 - Construction

